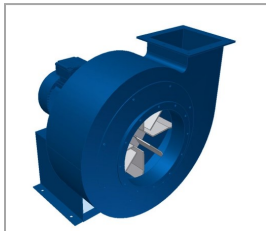




Indusvent Product Guide 2025



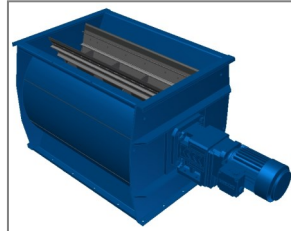
BENDS



FANS



DUCTING



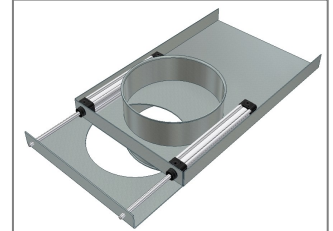
ROTARY VALVES



FLEXIBLE DUCTING



DIVERTERS



AUTO DAMPERS

Telephone : 0333 9967 333

Email : mail@indusvent.com

TABLE OF CONTENTS		
PRODUCTS	STOCK ITEM	PAGE
BENDS	YES	3
2mm HEAVY DUTY	To Order	4
STRAIGHT DUCTING	YES	5
DUCT WITH ACCESS DOORS	YES	6
BRANCHES / TROUSERS	To Order	7
GALVANISED BLANK PLATES	YES	8
TAPERS / FLEX COLLAR / JET COWL	YES	9
SLIDE DAMPERS	YES	10
MANUAL THROTTLE VALVES	YES	11
DIVERTER VALVES	YES	12
DUCTING CLIPS	YES	13
FLEXIBLE DUCTING	YES	14
CLEAN UP NOZZLE WANDS	YES	15
FIXINGS	YES	16
FIXINGS continued	YES	17
COLLECTION BAGS	YES	18
FANS	YES	19
ROTARY VALVES	YES	20
SPARE PARTS	YES	21
FILTER BAGS	YES	22
EXPLOSION ISOLATION VALVES	To Order	23
EXTRACTION ARMS Ø160 & Ø200mm	To Order	24
INDUSTRIAL VACUUM CLEANERS	YES	25
INDUSTRIAL VACUUM CLEANERS SPARE PARTS	YES	26



PRODUCT GUIDE – BENDS

T: 0333 9967 333
E: mail@indusvent.com

GALVANISED 1mm CLIPPED DUCTWORK

DIA mm	30° BEND	45° BEND	60° BEND	90° BEND
80	GB080/30	GB080/45	GB080/60	GB080/90
100	GB100/30	GB100/45	GB100/60	GB100/90
120	GB120/30	GB120/45	GB120/60	GB120/90
140	GB140/30	GB140/45	GB140/60	GB140/90
150	GB150/30	GB150/45	GB150/60	GB150/90
160	GB160/30	GB160/45	GB160/60	GB160/90
180	GB180/30	GB180/45	GB180/60	GB180/90
200	GB200/30	GB200/45	GB200/60	GB200/90
225	GB225/30	GB225/45	GB225/60	GB225/90
250	GB250/30	GB250/45	GB250/60	GB250/90
275	GB275/30	GB275/45	GB275/60	GB275/90
300	GB300/30	GB300/45	GB300/60	GB300/90
350	GB350/30	GB350/45	GB350/60	GB350/90
400	GB400/30	GB400/45	GB400/60	GB400/90
450	GB450/30	GB450/45	GB450/60	GB450/90
500	GB500/30	GB500/45	GB500/60	GB500/90

LARGER DIAMETER DUCTWORK IS AVAILABLE UPON
REQUEST

PRESSED BENDS



30° BEND



45° BEND



60° BEND



90° BEND

ALL BENDS UPTO AND INCLUDING
Ø400mm ARE PRESSED CONSTRUCTION

ARE RADIUS 1.5D AS STANDARD,
OTHER RADIUS AVAILABLE

SEGMENTED BENDS



30° BEND



45° BEND



60° BEND



90° BEND

ALL BENDS Ø450mm AND ABOVE ARE
SEGMENTED CONSTRUCTION AS STAND-
ARD

STANDARD ANGLE OF BENDS ARE AS
LISTED, OTHER ANGLES ARE
AVAILABLE ON REQUEST

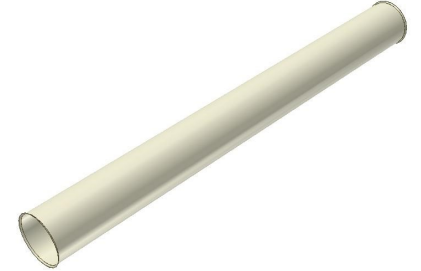
**PRODUCT GUIDE –
2mm HEAVY DUTY**

T: 0333 9967 333
E: mail@indusvent.com

MILD STEEL CLIPPED / FLANGED DUCTWORK						
2mm MILD STEEL RAL 9006						
DIA mm	30° BEND	45° BEND	60° BEND	90° BEND	0.5 METRE WEAR PIECE	2 METRE LENGTH
<u>PRESSED CONSTRUCTION WIDE TENSION CLIP ASSEMBLY</u>						
200	2MS/B200/30	2MS/B200/45	2MS/B200/60	2MS/B200/90	2MS/S200/0.5M	2MS/S200/2M
250	2MS/B250/30	2MS/B250/45	2MS/B250/60	2MS/B250/90	2MS/S250/0.5M	2MS/S250/2M
300	2MS/B300/30	2MS/B300/45	2MS/B300/60	2MS/B300/90	2MS/S300/0.5M	2MS/S300/2M
350	2MS/B350/30	2MS/B350/45	2MS/B350/60	2MS/B350/90	2MS/S350/0.5M	2MS/S350/2M
400	2MS/B400/30	2MS/B400/45	2MS/B400/60	2MS/B400/90	2MS/S400/0.5M	2MS/S400/2M
<u>SEGMENTED CONSTRUCTION / FLANGED ASSEMBLY</u>						
500	2MS/B500/30	2MS/B500/45	2MS/B500/60	2MS/B500/90	_____	_____
550	2MS/B550/30	2MS/B550/45	2MS/B550/60	2MS/B550/90	_____	_____
600	2MS/B600/30	2MS/B600/45	2MS/B600/60	2MS/B600/90	_____	_____
650	2MS/B650/30	2MS/B650/45	2MS/B650/60	2MS/B650/90	_____	_____



0.5 METRE LENGTH



2 METRE LENGTH



30° BEND

45° BEND

60° BEND

90° BEND

LARGER DIAMETER DUCTWORK IS AVAILABLE UPON REQUEST

3mm MILD STEEL DUCTING IS AVAILABLE UPON REQUEST

GALVANISED 1mm CLIPPED DUCTWORK

DIA mm	2M STRAIGHT
80	GS080/2M
100	GS100/2M
120	GS120/2M
140	GS140/2M
150	GS150/2M
160	GS160/2M
180	GS180/2M
200	GS200/2M
225	GS225/2M
250	GS250/2M
275	GS275/2M
300	GS300/2M
350	GS350/2M
400	GS400/2M
450	GS450/2M
500	GS500/2M



2 METRE LENGTH

LARGER DIAMETER DUCTWORK IS AVAILABLE UPON REQUEST

**PRODUCT GUIDE –
DUCT WITH ACCESS DOORS**

T: 0333 9967 333
E: mail@indusvent.com

**HINGED ACCESS DOORS ON 0.5M
STRAIGHT DUCTING**

DIA mm	PRODUCT CODE
100	GS100/0.5M/AD
120	GS120/0.5M/AD
140	GS140/0.5M/AD
150	GS150/0.5M/AD
160	GS160/0.5M/AD
180	GS180/0.5M/AD
200	GS200/0.5M/AD
225	GS225/0.5M/AD
250	GS250/0.5M/AD
275	GS275/0.5M/AD
300	GS300/0.5M/AD
350	GS350/0.5M/AD
400	GS400/0.5M/AD
450	GS450/0.5M/AD
500	GS500/0.5M/AD



**HINGED ACCESS DOOR ON 0.5M
STRAIGHT DUCTING**



CIRCULAR ACCESS DOOR

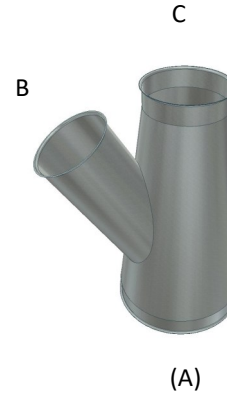
**CIRCULAR ACCESS
DOORS**

DIA mm	PRODUCT CODE
200	GAD200
250	GAD250
300	GAD300
350	GAD350
400	GAD400
711	GAD711
800	GAD800

LARGER DIAMETER DUCTWORK IS AVAILABLE UPON REQUEST

GALVANISED 1mm CLIPPED DUCTWORK

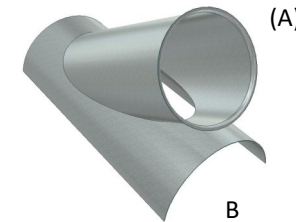
DIA mm (A)	BRANCH ON TAPER or STRAIGHT	TROUSER PIECE	BRANCH ON PLATE
80	GBR30/080/**B/**C	GTR30/080/**B/**C	GBRP30/080/**B
100	GBR30/100/**B/**C	GTR30/100/**B/**C	GBRP30/100/**B
120	GBR30/120/**B/**C	GTR30/120/**B/**C	GBRP30/120/**B
140	GBR30/140/**B/**C	GTR30/140/**B/**C	GBRP30/140/**B
150	GBR30/150/**B/**C	GTR30/150/**B/**C	GBRP30/150/**B
160	GBR30/160/**B/**C	GTR30/160/**B/**C	GBRP30/160/**B
180	GBR30/180/**B/**C	GTR30/180/**B/**C	GBRP30/180/**B
200	GBR30/200/**B/**C	GTR30/200/**B/**C	GBRP30/200/**B
225	GBR30/225/**B/**C	GTR30/225/**B/**C	GBRP30/225/**B
250	GBR30/250/**B/**C	GTR30/250/**B/**C	GBRP30/250/**B
275	GBR30/275/**B/**C	GTR30/275/**B/**C	GBRP30/275/**B
300	GBR30/300/**B/**C	GTR30/300/**B/**C	GBRP30/300/**B
350	GBR30/350/**B/**C	GTR30/350/**B/**C	GBRP30/350/**B
400	GBR30/400/**B/**C	GTR30/400/**B/**C	GBRP30/400/**B
450	GBR30/450/**B/**C	GTR30/450/**B/**C	GBRP30/450/**B
500	GBR30/500/**B/**C	GTR30/500/**B/**C	GBRP30/500/**B



**BRANCH ON
TAPER / STRAIGHT**



TROUSER PIECE

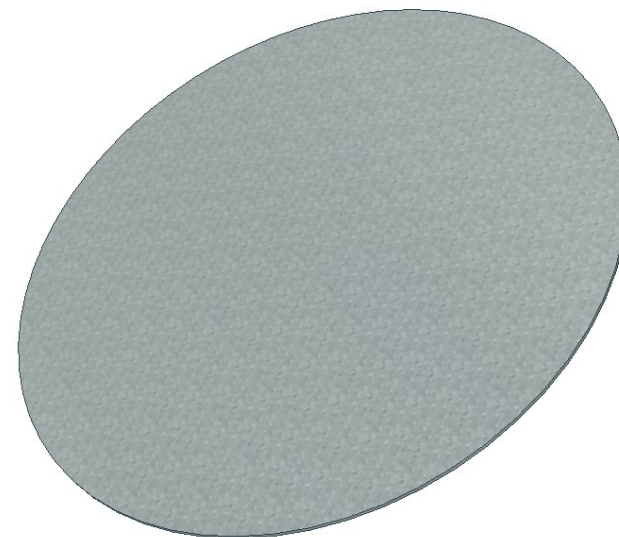


BRANCH ON PLATE

LARGER DIAMETER DUCTWORK IS AVAILABLE
UPON REQUEST

STANDARD ANGLE FOR ALL INDUSVENT BRANCH/ TROUSER PIECE = 30°

GALVANISED BLANK PLATES	
DIA mm	PRODUCT CODE
80	GBP/080
100	GBP/100
120	GBP/120
140	GBP/140
150	GBP/150
160	GBP/160
180	GBP/180
200	GBP/200
225	GBP/225
250	GBP/250
275	GBP/275
300	GBP/300
350	GBP/350
400	GBP/400
450	GBP/450
500	GBP/500



GALVANISED BLANKING PLATE

GALVANISED 1mm CLIPPED DUCTWORK			
DIA mm (A)	TAPER	FLEX COLLAR	JET COWL
80	GTAP080/**B	GFC080	-
100	GTAP100/**B	GFC100	-
120	GTAP120/**B	GFC120	GJC120
140	GTAP140/**B	GFC140	GJC140
150	GTAP150/**B	GFC150	GJC150
160	GTAP160/**B	GFC160	GJC160
180	GTAP180/**B	GFC180	GJC180
200	GTAP200/**B	GFC200	GJC200
225	GTAP225/**B	GFC225	GJC225
250	GTAP250/**B	GFC250	GJC250
275	GTAP275/**B	GFC275	GJC275
300	GTAP300/**B	GFC300	GJC300
350	GTAP350/**B	GFC350	GJC350
400	GTAP400/**B	GFC400	GJC400
450	GTAP450/**B	-	GJC450
500	GTAP500/**B	-	GJC500



(A)

TAPER MANUFACTURED WITH A COLLAR AS STANDARD Ø250mm AND ABOVE



(A)

FLEX COLLAR



(A)

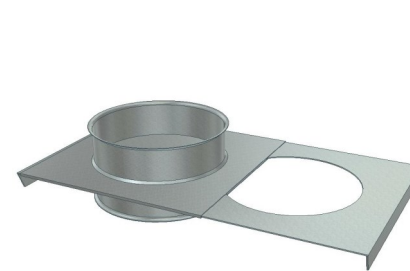
JET COWL

LARGER DIAMETER DUCTWORK IS AVAILABLE UPON REQUEST

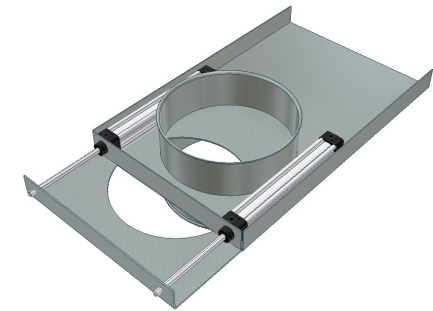
**PRODUCT GUIDE –
SLIDE DAMPERS**

T: 0333 9967 333
E: mail@indusvent.com

GALVANISED 1mm CLIPPED DUCTWORK			
DIA mm	MANUAL SLIDING DAMPER	MANUAL SLIDING DAMPER SEALED	PNEUMATIC SLIDING DAMPER WITH 24v DC SOLENOID VALVE
80	GSD080	GSDS080	GSDP080
100	GSD100	GSDS100	GSDP100
120	GSD120	GSDS120	GSDP120
140	GSD140	GSDS140	GSDP140
150	GSD150	GSDS150	GSDP150
160	GSD160	GSDS160	GSDP160
180	GSD180	GSDS180	GSDP180
200	GSD200	GSDS200	GSDP200
225	GSD225	GSDS225	GSDP225
250	GSD250	GSDS250	GSDP250
275	GSD275	GSDS275	GSDP275
300	GSD300	GSDS300	GSDP300
350	GSD350	GSDS350	GSDP350
400	GSD400	GSDS400	GSDP400
450	GSD450	GSDS450	GSDP450
500	GSD500	GSDS500	GSDP500



MANUAL SLIDING DAMPER



PNEUMATIC SLIDING DAMPER

24vDC Solenoid Valve supplied with the above pneumatic damper
 Stock Code: CRIT/SOL/DIV/SA
 Stock Code: CRIT/SOL/DIV/COIL
 Stock Code: CRIT/SOL/DIV/PLUG

Reed Switches are available to be supplied with any of the above
 Stock Code: CRIT/REED/SWITCH
 Stock Code: CRIT/REED/BACKET

GALVANISED 1mm CLIPPED DUCTWORK	
DIA mm	PRODUCT CODE
80	GTV080
100	GTV100
120	GTV120
140	GTV140
150	GTV150
160	GTV160
180	GTV180
200	GTV200
225	GTV225
250	GTV250
275	GTV275
300	GTV300
350	GTV350
400	GTV400
450	GTV450
500	GTV500



MANUAL THROTTLE VALVE

**PRODUCT GUIDE –
DIVERTER VALVES**

T: 0333 9967 333
E: mail@indusvent.com

FULLY WELDED DIVERTER TROUSER / BRANCH TYPE		
DIA mm	MANUAL	PNEUMATIC
100	DIV/MAN/100	DIV/PNEU/100
120	DIV/MAN/120	DIV/PNEU/120
140	DIV/MAN/140	DIV/PNEU/140
150	DIV/MAN/150	DIV/PNEU/150
160	DIV/MAN/160	DIV/PNEU/160
180	DIV/MAN/180	DIV/PNEU/180
200	DIV/MAN/200	DIV/PNEU/200
250	DIV/MAN/250	DIV/PNEU/250
300	DIV/MAN/300	DIV/PNEU/300
350	DIV/MAN/350	DIV/PNEU/350
400	DIV/MAN/400	DIV/PNEU/400
450	DIV/MAN/450	DIV/PNEU/450
500	DIV/MAN/500	DIV/PNEU/500
550	DIV/MAN/550	DIV/PNEU/550



**TROUSER TYPE
DIVERTER**



**BRANCH TYPE
DIVERTER**



PLUG & 24V DC COIL



**SINGLE SOLENOID ACTIVATED
VALVE**



5/2 G1/4 Solenoid/Solenoid Valve

**DOUBLE SOLENOID ACTIVATED
VALVE**

Pneumatic Diverter includes a 24vDC Single Solenoid activated Valve

Stock Code: CRIT/SOL/DIV/SA
Stock Code: CRIT/SOL/DIV/COIL
Stock Code: CRIT/SOL/DIV/PLUG

Reed Switches are available to be supplied with any of the above

Stock Code: CRIT/REED/SWITCH
Stock Code: CRIT/REED/BRACKET

**PRODUCT GUIDE –
DUCTING CLIPS**

T: 0333 9967 333
E: mail@indusvent.com

GALVANISED 1mm CLIPPED DUCTWORK							
DIA mm	TENSION CLIPS	2mm TENSION CLIPS	WIDE TENSION CLIPS	2mm WIDE TENSION CLIPS	RAPID LOCK CLIPS	DUCT SUPPORT CLIPS	GALV FLANGES
80	GTC080	2MM/GTC/080	-	-	GRLC080	GDSC080	GF080
100	GTC100	2MM/GTC/100	-	-	GRLC100	GDSC100	GF100
120	GTC120	2MM/GTC/120	-	-	GRLC120	GDSC120	GF120
140	GTC140	2MM/GTC/140	-	-	GRLC140	GDSC140	GF140
150	GTC150	2MM/GTC/150	-	-	GRLC150	GDSC150	GF150
160	GTC160	2MM/GTC/160	-	-	GRLC160	GDSC160	GF160
180	GTC180	2MM/GTC/180	GWTC180	-	GRLC180	GDSC180	GF180
200	GTC200	2MM/GTC/200	GWTC200	-	GRLC200	GDSC200	GF200
225	GTC225	2MM/GTC/225	GWTC225	-	GRLC225	GDSC225	GF225
250	-	2MM/GTC/250	GWTC250	GWTC250/2MM	GRLC250	GDSC250	GF250
275	-	2MM/GTC/275	GWTC275	-	GRLC275	GDSC275	GF275
300	-	2MM/GTC/300	GWTC300	GWTC300/2MM	GRLC300	GDSC300	GF300
350	-	2MM/GTC/350	GWTC350	GWTC350/2MM	GRLC350	GDSC350	GF350
400	-	2MM/GTC/400	GWTC400	GWTC400/2MM	GRLC400	GDSC400	GF400
450	-	2MM/GTC/450	GWTC450	-	GRLC450	GDSC450	GF450
500	-	2MM/GTC/500	GWTC500	-	GRLC500	GDSC500	GF500



LARGER DIAMETER DUCTWORK IS AVAILABLE UPON REQUEST

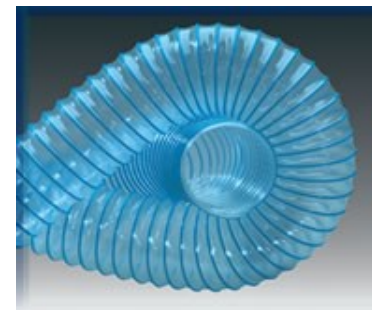
TENSION CLIPS ARE SOLD IN MIN QTY OF 10 WHEN =< Ø350mm

DUCT SUPPORT CLIPS ARE SOLD IN MIN QTY OF 5 WHEN =< Ø350mm

**PRODUCT GUIDE –
FLEXIBLE DUCTING**

T: 0333 9967 333
E: mail@indusvent.com

POLYURETHANE FLEXIBLE DUCTING					
DIA mm	PU Medium Duty		PU Heavy Duty		HOSE CLIPS (each)
	5M	10M	5M	10M	
51	MPU051/5	MPU051/10	HPU051/5	HPU051/10	HCZ051
63	MPU063/5	MPU063/10	HPU063/5	HPU063/10	HCZ063
82	MPU082/5	MPU082/10	HPU082/5	HPU082/10	HCZ082
102	MPU102/5	MPU102/10	HPU102/5	HPU102/10	HCZ102
127	MPU127/5	MPU127/10	HPU127/5	HPU127/10	HCZ127
144	MPU144/5	MPU144/10	HPU144/5	HPU144/10	HCZ144
152	MPU152/5	MPU152/10	HPU152/5	HPU152/10	HCZ152
165	MPU165/5	MPU165/10	HPU165/5	HPU165/10	HCZ165
182	MPU182/5	MPU182/10	HPU182/5	HPU182/10	HCZ182
203	MPU203/5	MPU203/10	HPU203/5	HPU203/10	HCZ203
228	MPU228/5	MPU228/10	HPU228/5	HPU228/10	HCZ228
254	MPU254/5	MPU254/10	HPU254/5	HPU254/10	HCZ254
279	MPU279/5	MPU279/10	HPU279/5	HPU279/10	HCZ279
305	MPU305/5	MPU305/10	HPU305/5	HPU305/10	HCZ305



MEDIUM DUTY



HEAVY DUTY



HOSE CLIPS

All grades and sizes available from stock, standard despatch is same day for next working day delivery when order is received before 2pm

**PRODUCT GUIDE –
CLEAN UP NOZZLE WANDS**

**T: 0333 9967 333
E: mail@indusvent.com**

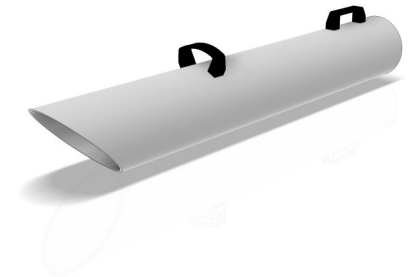
CLEAN UP NOZZLE WANDS	
PRODUCT CODE	DESCRIPTION
VAC/HOSE/NOZZLE/WAND/100	BLACK CLEAN UP NOZZLE / WAND WITH HANDLE FOR 102mm FLEX
VAC/HOSE/NOZZLE/WAND/125	CLEAN UP NOZZLE / WAND WITH HANDLE FOR 127mm FLEX
VAC/HOSE/NOZZLE/WAND/160	CLEAN UP NOZZLE / WAND WITH 2 HANDLES FOR 165mm FLEX



VAC HOSE NOZZLE WAND 102



VAC HOSE NOZZLE WAND 125



VAC HOSE NOZZLE WAND 160

NUTS, BOLTS & FIXINGS	
PRODUCT CODE	DESCRIPTION
FXGHEXM8/30	GALVANISED HEX HEAD SET SCREW— M8 x 30mm
FXGHEXM10/30	GALVANISED HEX HEAD SET SCREW— M10 x 30mm
FXGHEXM16/40	GALVANISED HEX HEAD SET SCREW— M16 x 40mm
FXGNUTM8	GALVANISED NUT— M8
FXGNUTM10	GALVANISED NUT— M10
FXGNUTM16	GALVANISED NUT— M16
FXZCAPM5/40	ZINC CAP HEAD SET SCREW— M5 x 40mm
FXZCAPM8/30	ZINC CAP HEAD SET SCREW— M8 x 30mm
FXZHEXM8/30	ZINC HEX HEAD SET SCREW— M8 x 30mm
FXZHEXM10/30	ZINC HEX HEAD SET SCREW – M10 x 30mm
FXZCAPM8/80	ZINC CAP HEAD SET SCREW – M8 x 80 FULL THREAD
FXZNUTM5	ZINC NUT - M5
FXZNUTM8	ZINC NUT – M8
FXZNUTM10	ZINC NUT – M10
FXRAWLM8/50	RAWLBOLT – M8 x 50mm
FXPARAM8/65	PARABOLT - M8 x 65mm
FXPARAM10/100	PARABOLT – M10 x 100mm
FXPARAM12/130	PARABOLT – M12 x 130mm
FXPARAM16/150	PARABOLT – M16 x 150mm
FXTEK19	TEK SCREWS – 4.8 x 19 mm long
FXSRM8/3M	SCREWED ROD M8 x 3000mm
FXSRM10/3M	SCREWED ROD M10 x 3000mm
FXSRCM8	ROD CONNECTOR M8
FXSRCM10	ROD CONNECTOR M10
FXCOACHM8/40	M8 X 40mm COACH SCREW



**HEX HEAD SET
SCREW**



**CAP HEAD SET
SCREW**



**RAWL BOLT &
PARABOLT**

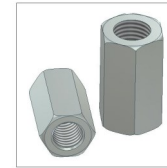


**M8 x40mm
Coach Screw**

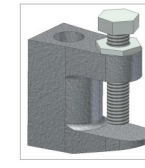


TEK SCREWS

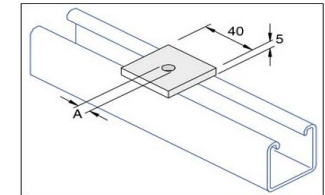
INSTALLATION ACCESSORIES	
PRODUCT CODE	DESCRIPTION
FXGCON	GALV. CONDUIT 20 mm x 3m
FXFL2	FL2 GIRDER CLAMP
FXDT	GREY DUCT TAPE
FXSEALER/EXT	DUCTING SEALER GREY
FXUNI	SLOTTED CHANNEL 40mm X 40mm X 3M
FX/ZEB/M8	M8 ZEBEDEE (No Spring)
FX/ZEB/M10	M10 ZEBEDEE (No Spring)
FX/ZEB/M12	M12 ZEBEDEE (No Spring)
FXGBRACKET	SLOTTED CHANNEL CANTILEVER WALL BRACKET 750mm
FXUNI/ANGLE	SLOTTED CHANNEL ANGLE BRACKET 41x41
FXUNI/WASHER/M8	SLOTTED CHANNEL SQUARE WASHER 41x41 (M8 Hole)
FXUNI/WASHER/M10	SLOTTED CHANNEL SQUARE WASHER 41x41 (M10 Hole)
FXUNI/WINDOW	SLOTTED CHANNEL WINDOW CLAMP 41x41
FXUNI/FLOOR	SLOTTED CHANNEL FLOOR PLATE 203 x 305mm
FXUNI/BASE	SINGLE CHANNEL BASE PLATE
FXUNI/30/ANGLE	SLOTTED CHANNEL 30° ANGLE BRACKET 78x78mm
FXUNI/45/ANGLE	SLOTTED CHANNEL 45° ANGLE BRACKET 78x78mm
FXUNI/60/ANGLE	SLOTTED CHANNEL 60° ANGLE BRACKET 78x78mm
FXUNI/ENDCAP	SLOTTED CHANNEL END CAP BLACK



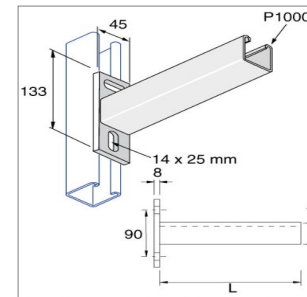
**ROD
CONNECTORS**



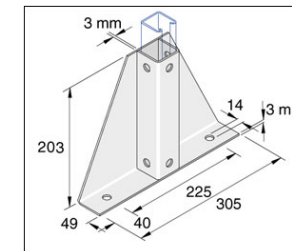
**FL2 GIRDER
CLAMPS**



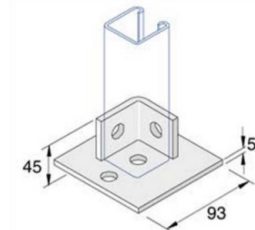
**SQUARE WASHER
41x41mm
A= 8 & 10mm**



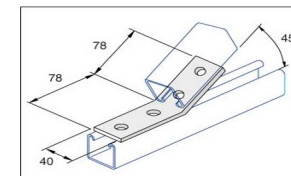
**CANTILEVER WALL
BRACKET 750mm**



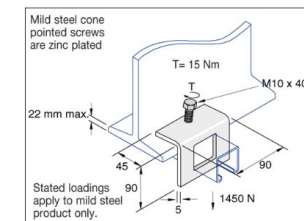
**FLOOR PLATE
203 x 305mm**



**SINGLE
CHANNEL BASE
PLATE**



**45° ANGLE
BRACKET
Also in 30° & 60°**

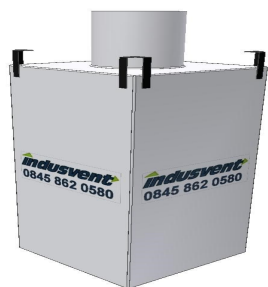


**WINDOW CLAMP
41x41 mm**

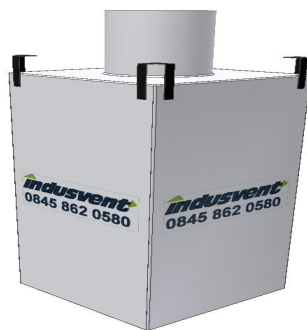
**PRODUCT GUIDE –
COLLECTION BAGS**

T: 0333 9967 333
E: mail@indusvent.com

COLLECTION BAGS	
PRODUCT CODE	DESCRIPTION
CB/0.5M/BULKBAG	Heavy Duty Sealed Bag 0.5m ³ , 90 x 90 x 80cm
CB/1.8M/BULKBAG	Heavy Duty Sealed Bag 1.8m ³ , 100 x 100 x 180cm
CB/1M/BULKBAG	Heavy Duty Sealed Bag 1m ³ , 99 x 99 x 102cm
CB/2M/BULKBAG	Heavy Duty Sealed Bag 2m ³ , 99 x 99 x 202cm
CB/POLY700/1450	Polythene Bag 700 x 1450mm Long Ø430
CB/POLY800/1450	Polythene Bag 800 x 1450mm Long Ø500
CB/POLY1000/1450	Polythene Bag 1000 x 1450mm Long Heavy Duty Ø620
CB/RS/500	6'-6" x 1" LS/LW Ratchet Strap for Bulk Bag



**HEAVY DUTY SEALED BAG
APPROX CAPACITY = 0.5m³**



**HEAVY DUTY SEALED BAG
APPROX CAPACITY = 1m³**



**HEAVY DUTY SEALED BAG
APPROX CAPACITY = 1.8m³**



**HEAVY DUTY SEALED BAG
APPROX CAPACITY = 2m³**

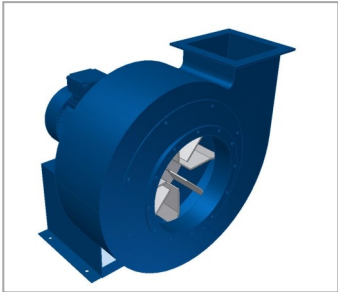


**POLYTHENE COLLECTION
BAG**

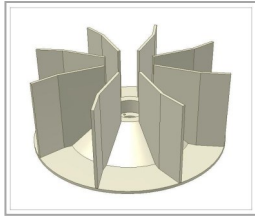
**PRODUCT GUIDE –
FANS**

T: 0333 9967 333
E: mail@indusvent.com

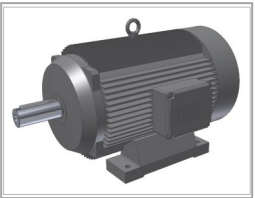
MATERIAL HANDLING DIRECT DRIVE FAN SETS					
MODEL - MOTOR SIZE	FAN SET Left Hand	FAN SET Right Hand	IMPELLOR Left Hand	IMPELLOR Right Hand	MOTOR
JK25D - 4kW	FAN/JK25D/4LN	FAN/JK25D/4RN	FAN/IMP/25D/L	FAN/IMP/25D/R	FAN/MOT/4KW
JK30D - 7.5kW	FAN/JK30D/7.5LN	FAN/JK30D/7.5RN	FAN/IMP/30D/L	FAN/IMP/30D/R	FAN/MOT/7.5KW
JK35D - 15kW	FAN/JK35D/15LN	FAN/JK35D/15RN	FAN/IMP/35D/L	FAN/IMP/35D/R	FAN/MOT/15KW
JK40D - 18.5kW	FAN/JK40D/18.5LN	FAN/JK40D/18.5RN	FAN/IMP/40D/L	FAN/IMP/40D/R	FAN/MOT/18KW
T300D—37Kw	FAN/T300D/37LN	FAN/T300D/37RN	FAN/IMP/T300/L	FAN/IMP/T300/R	FAN/MOT/37KW
BELT DRIVEN					
JK40K - 15kW	FAN/JK40K/15LN	FAN/JK40K/15RN	FAN/IMP/40K/L	FAN/IMP/40K/R	FAN/MOT/15KW
JK45K - 22kW	FAN/JK45K/22LN	FAN/JK45K/22RN	FAN/IMP/45K/L	FAN/IMP/45K/R	FAN/MOT/22KW
JK55K - 37kW	FAN/JK55K/37LN	FAN/JK55K/37RN	FAN/IMP/55K/L	FAN/IMP/55K/R	FAN/MOT/37KW
JK75K - 75kW	FAN/JK75K/75LN	FAN/JK75K/75RN	FAN/IMP/75K/L	FAN/IMP/75K/R	FAN/MOT/75KW
T300K - 37kW— 1998-2014 model	FAN/T300K/37LN	FAN/T300K/37RN	FAN/IMP/T300/L	FAN/IMP/T300/R	FAN/MOT/37KW



D SERIES FAN



IMPELLOR



MOTOR

ROTARY VALVES & ACCESSORIES

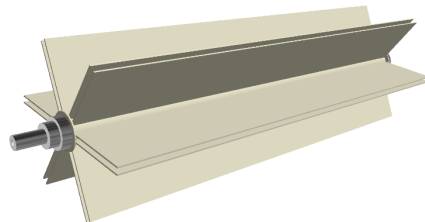
TYPE	SPEED (rpm)	ROTARY VALVE	ROTOR including end shaft	GEARED MOTOR	RUBBER Service Kit including blades, seals & bearing	VULKONNEN Service Kit including blades, seals & bearing
JK25S - 0.55kW	20	RV/JK25S/0.55kW	RV/ROT/JK25S	RV/GEAR/MOT/0.55	RV/RUB-KIT/JK25S	RV/VULK-KIT/JK25S
JK50S - 0.55kW	20	RV/JK50S/0.55kW	RV/ROT/JK50S	RV/GEAR/MOT/0.55	RV/RUB-KIT/JK50S	RV/VULK-KIT/JK50S
JK75S - 0.55kW	20	RV/JK75S/0.55kW	RV/ROT/JK75S	RV/GEAR/MOT/0.55	RV/RUB-KIT/JK75S	RV/VULK-KIT/JK75S
JK100S - 0.55kW	20	RV/JK100S/0.55kW	RV/ROT/JK100S	RV/GEAR/MOT/0.55	RV/RUB-KIT/JK100S	RV/VULK-KIT/JK100S

HEAVY DUTY ROTARY VALVES & ACCESSORIES

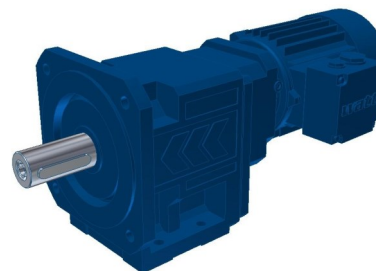
B500S 1.5kW	32	RV/B500S/1.5kW	RV/ROT/B500S	RV/GEAR/MOT/1.5	RV/RUB-KIT/B500	RV/VULK-KIT/B500
B750S 1.5kW	32	RV/B750S/1.5kW	RV/ROT/B750S	RV/GEAR/MOT/1.5	RV/RUB-KIT/B750	RV/VULK-KIT/B750
B1000S 3kW	30	RV/B1000S/3kW	RV/ROT/B1000S	RV/GEAR/MOT/3	RV/RUB-KIT/B1000	RV/VULK-KIT/B1000



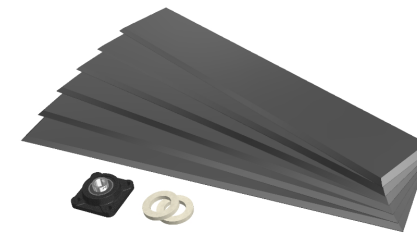
ROTARY VALVE



ROTOR



GEARED MOTOR



RUBBER SERVICE KIT

COMMON FILTER SPARES			
FILTER	POSITION	PRODUCT CODE	DESCRIPTION
SBF/SB90	CLEANING SYSTEM	CRIT/PNEU/DIA	PNEUMATIC DIAPHRAGM VALVE - NEW TYPE FOR SB90 / SBF AFTER 2020
BF34 / BF55	CLEANING SYSTEM	CRIT/PNEU/DIA/BF55	PNEUMATIC DIAPHRAGM VALVE 24vdc PLUG & COIL FOR BF34 & BF55
SB90	CLEANING SYSTEM	CRIT/SOL/SB90/220V	SOLENOID VALVE SB90 220V TANK INLET VALVE
SBF	CLEANING SYSTEM	CRIT/SOL/SBF/24V	SOLENOID VALVE SBF 24V TANK INLET VALVE
SBF/SB90	SPARE PARTS	CRIT/TEMPERATURE/SENSOR	TEMPERATURE SENSOR FOR ALL FILTERS
SBF/SB90	SPARE PARTS	CRIT/FIREDAMPER/SWITCH	ATEX MICRO SWITCH FOR SBF/SB90 FIRE DAMPER INCLUDING BRACKET
SBF/SB90	SPARE PARTS	CRIT/SBF/DOORSWITCH	SBF DOOR SWITCH—SAFETY MAGNETIC SWITCH
VARIOUS	SPARE PARTS	CRIT/DUST/SENSOR	BROKEN BAG / DUST SENSOR FOR BF, SB AND SBF FILTERS
VARIOUS	SPARE PARTS	CRIT/PADDLE/SWITCH	AAFS ADJUSTABLE AIR FLOW PADDLE SWITCH
VARIOUS	SPARE PARTS	CRIT/JK500D	JK500D PRESSURE SENSOR
VARIOUS	SPARE PARTS	CRIT/JK500D/SEN/COV/EXT	JK500D PRESSURE SENSOR COVER Ø300 HORIZONTAL EXTENDED
VARIOUS	SPARE PARTS	CRIT/LEVELSENSOR/TUNINGFORK	LEVEL SWITCH FOR BULK BAG—TUNING FORK ATEX APPROVED
VARIOUS	SPARE PARTS	CRIT/REED/SWITCH	24v REED SWITCH FOR DAMPERS / DIVERTERS
VARIOUS	SPARE PARTS	CRIT/REED/BRACKET	BRACKET FOR REED SWITCH
VARIOUS	SPARE PARTS	CRIT/ROTATION/SENSOR	OMRON M12 PROXIMITY ROTATION SENSOR FOR ROTARY VALVES & SCRAPER
VARIOUS	SPARE PARTS	CRIT/ROTATION/SENSOR/LEAD	5M LEAD FOR OMRON M12 PROXIMITY ROTATION SENSOR FOR ROTARY VALVES & SCRAPER
SCREW FILTER	SPARE PARTS	CRIT/SHEERPLUG	SHEER PLUGS FOR MODULAR SCREW FILTER (15pk)
SBF/SB90	SPARE PARTS	FS/DS44/SEAL	ACCESS DOOR SEAL FOR SB90 / SBF END DOORS PER MTR (DS44)
SBF/SB90	SPARE PARTS	SBF/DOORSEAL	FILTER DOOR SEAL FOR SBF CLEANING/BOTTOM SECTION DOOR PER MTR



DIAPHRAGM VALVE



ATEX MICRO SWITCH



DOOR SWITCH



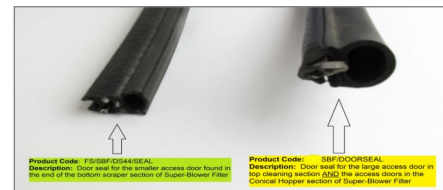
DUST SENSOR



ROTATION SENSOR



REED SWITCH



DOOR SEALS

PRODUCT GUIDE – FILTER BAGS

T: 0333 9967 333
E: mail@indusvent.com

MODULAR SYSTEM FILTER BAGS

TYPE OF BAG	400G POLYESTER FOR SPIGOT FIT Ø220	Length (mm)	400G POLYESTER FOR SNAP FIT Ø200	Length (mm)
'E' TYPE	FLBAG/E/SP/P	2470	FLBAG/E/SN/P	2440
'H' TYPE	FLBAG/H/SP/P	2020	FLBAG/H/SN/P	1990
'M' TYPE	FLBAG/M/SP/P	1570	—	—
'MX' TYPE	—		FLBAG/MX	3000

CLIP FOR SPIGOT TYPE BAG

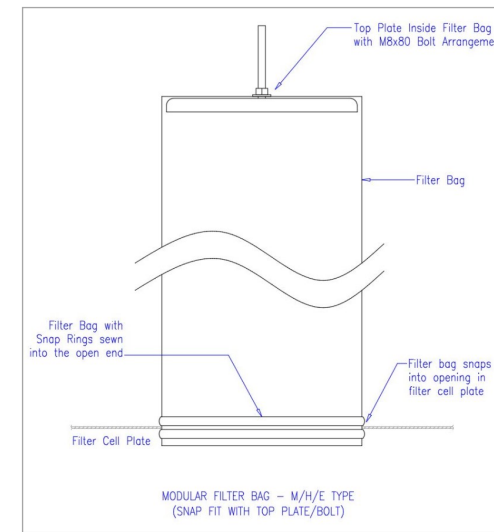
CLIP FOR Ø220mm FILTER BAG	FLBAG/CLIP/220
----------------------------	----------------

SUPER BLOWER FILTER BAGS

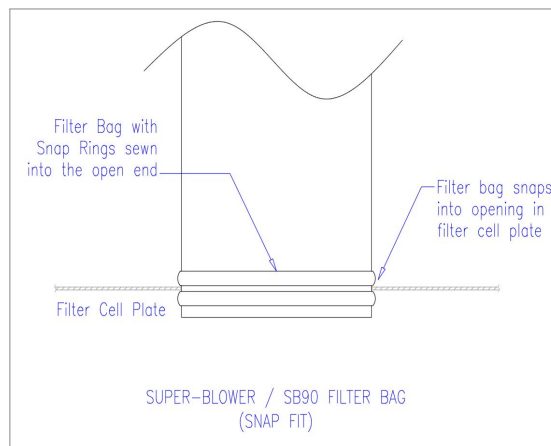
TYPE OF BAG	POYESTER PE40/PP25 FOR SNAP FIT	ANTI MOISTURE BAG FOR CUTTING HIGH MOISTURE CONTENT MATERIAL
SBF 3M	FLBAG/SBF/3M	—
SBF 3.5M	FLBAG/SBF/3.5M	—
SBF 4M	FLBAG/SBF/4M	FLBAG/SBF/4M/AM
SBF 5M	FLBAG/SBF/5M	FLBAG/SBF/5M/AM

BLANK PLATES

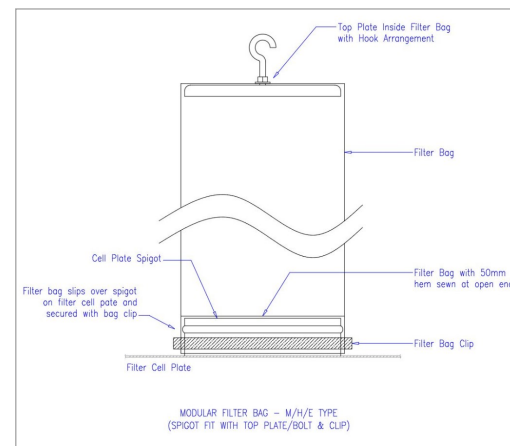
MODULAR FILTER	FLBAG/MOD/BLANK
SB90 / SBF	FLBAG/SBF/BLANK



MODULAR FILTER — SNAP FIT



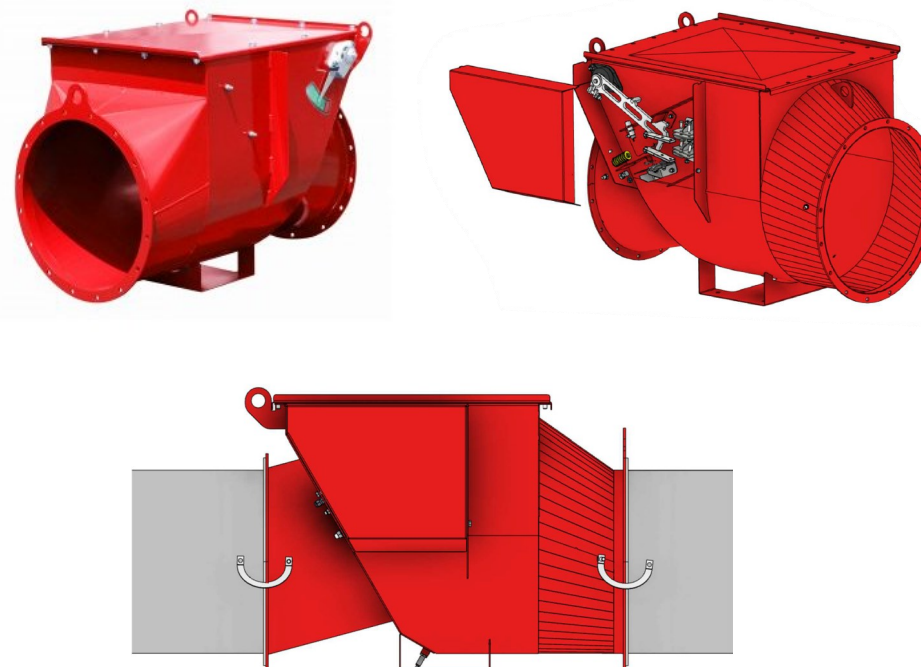
SB90 / SBF — SNAP FIT



MODULAR FILTER — SPIGOT FIT

ALL OTHER BAG TYPES ARE AVAILABLE UPON REQUEST

EXPLOSION ISOLATION VALVES	
PRODUCT CODE	DESCRIPTION
EXPV/200	200mm EXPLOSION ISOLATION VALVE WITH SENSOR
EXPV/250	250mm EXPLOSION ISOLATION VALVE WITH SENSOR
EXPV/300	300mm EXPLOSION ISOLATION VALVE WITH SENSOR
EXPV/350	350mm EXPLOSION ISOLATION VALVE WITH SENSOR
EXPV/400	400mm EXPLOSION ISOLATION VALVE WITH SENSOR
EXPV/450	450mm EXPLOSION ISOLATION VALVE WITH SENSOR
EXPV/500	500mm EXPLOSION ISOLATION VALVE WITH SENSOR
EXPV/550	550mm EXPLOSION ISOLATION VALVE WITH SENSOR
EXPV/600	600mm EXPLOSION ISOLATION VALVE WITH SENSOR
EXPV/650	650mm EXPLOSION ISOLATION VALVE WITH SENSOR
EXPV/700	700mm EXPLOSION ISOLATION VALVE WITH SENSOR
EXPV/750	750mm EXPLOSION ISOLATION VALVE WITH SENSOR
EXPV/800	800mm EXPLOSION ISOLATION VALVE WITH SENSOR



The explosion isolation valve is used in order to prevent an explosion in the extraction filter being able to travel back through the ducting to the production premises or machines.

The explosion isolation valve is made of composite structural steel and powder coated to corrosion class C3 cf. ISO 12944 (Colour: RAL 3000).

Supplied with and without position switch.

Tested and approved:

- Dust explosion class St. 1
- EN 16447—Explosion insulation systems
- Quality assurance of protection systems in accordance with directive

Note: Adapters are available to convert to our standard ducting diameters.

Advantages

- Wide variety of sizes available from Ø100 to Ø800
- Mechanical device that does not need electrical energy or activation system
- Low pressure losses
- High pressure resistance
- Optional position indicator
- Simple installation, inspections and maintenance
- Low maintenance costs
- Mechanical shut-down when the flap closes
- Suitable for technologies working with light wood dust
- Can be applied to ducting with bends

PRODUCT GUIDE – EXTRACTION ARMS Ø160 & Ø200mm

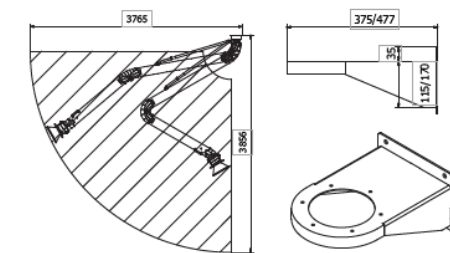
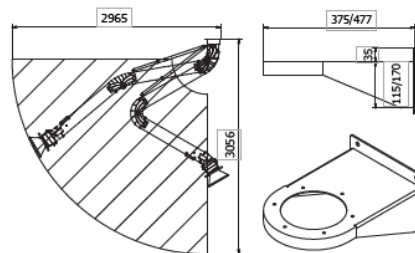
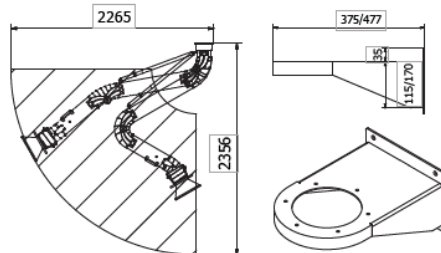
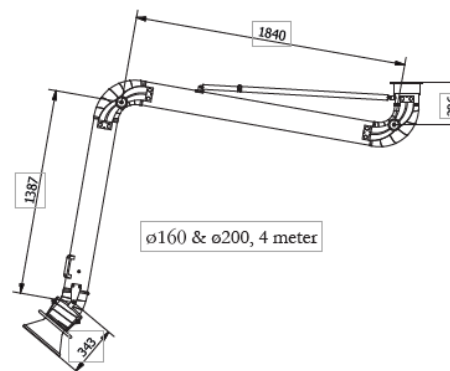
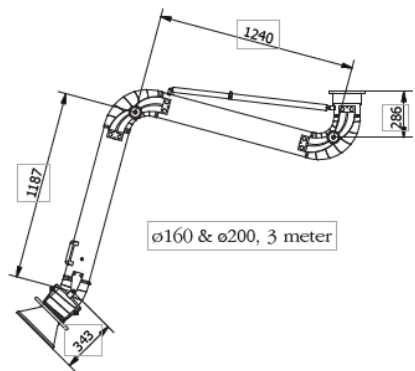
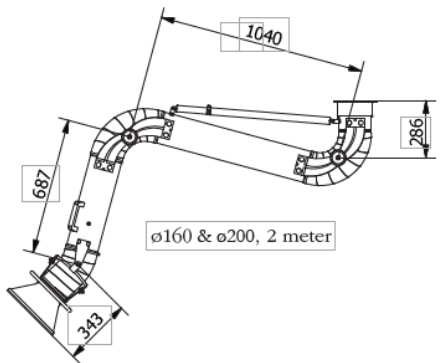
T: 0333 9967 333
E: mail@indusvent.com

4M

3M

2M

Wall Mounted
From 1,000 - 1,950 m³/h
Velocity - 15 m/s



EXTRACTION ARMS Ø160 & Ø200mm	
PRODUCT CODE	DESCRIPTION
EXTRACTARM/2M	Ø160 - 2M EXTRACTION ARM
EXTRACTARM/2M/200	Ø200 - 2M EXTRACTION ARM
EXTRACTARM/3M	Ø160 - 3M EXTRACTION ARM
EXTRACTARM/3M/200	Ø200 - 3M EXTRACTION ARM
EXTRACTARM/4M	Ø160 - 4M EXTRACTION ARM
EXTRACTARM/4M/200	Ø200 - 4M EXTRACTION ARM
EXTRACTARM/ BRACKET	WALL MOUNTING BRACKET Ø160 EXTRACTION ARM
EXTRACTARM/ BRACKET/200	WALL MOUNTING BRACKET Ø200 EXTRACTION ARM

INDUSTRIAL VACUUM CLEANERS

PRODUCT CODE	DESCRIPTION	CAPACITY	DIMENSIONS	Power (kW)	Max Air Flow (m³/h)	Suction Inlet (mm)	Filter Type	Surface Diameter (cm²-mm)
INDUS/VAC/W1	W1 INDUSTRIAL VACUUM CLEANER M CLASS FILTER	15L	400 x 430 x 960mm	1.1	180	32	Star	8.000—280
INDUS/VAC/W2	W2 INDUSTRIAL VACUUM CLEANER M CLASS	40L	550x 630 x 1150mm	2 x 1.1	360	50 (40mm Tools)	Star	20,000
INDUS/VAC/W3	W3 INDUSTRIAL VACUUM CLEANER M CLASS	65L (1000L option)	580 x 600 x 1350mm	3 x 1.1	540	80 (50mm Tools)	Star	20,000



CHEMICAL-PHARMACEUTICAL



CLEANING CONTRACTORS



TEXTILE



TIMBER INDUSTRY

Given the recent focus from the HSE forbidding the use of compressed air for cleaning in woodworking environments, these high-quality, single phase industrial vacuum cleaners are powerful, robust and long lasting.

All accessories included.

Detachable containers for easy material discharge / direct bagging.

Suitable for wet and dry service, also simultaneously.



W1 VAC UNIT



W2 VAC UNIT



W3 VAC UNIT

**PRODUCT GUIDE –
INDUSTRIAL VACUUM CLEANERS
SPARE PARTS**

T: 0333 9967 333
E: mail@indusvent.com

INDUSTRIAL VACUUM CLEANERS - SPARE PARTS	
PRODUCT CODE	DESCRIPTION
INDUS/VAC/BYPASS/MOTOR	1.1kW BY-PASS MOTOR, 240v 50 Hz
INDUS/VAC/DISPOSABLE/BAG/W1	ANTISTATIC DISPOSABLE BAG DUST CLASS H,80 mic FOR W1
INDUS/VAC/DISPOSABLE/BAG/W2/W3	ANTISTATIC DISPOSABLE BAG DUST CLASS H,80 mic FOR W2/W3
INDUS/VAC/DOUBLE/BEND	50mm DOUBLE BEND FOR W3
INDUS/VAC/STAR/FILTER/W1	ANTISTATIC M CLASS STAR FILTER FOR W1 VACUUM, 8,000cm2
INDUS/VAC/STAR/FILTER/W2/W3	ANTISTATIC M CLASS STAR FILTER FOR W2,W3 VACUUM 20,000cm2
INDUS/VAC/STEEL/RING/W1	STEEL RING FOR SUCTION INTO A DISPOABLE BAG, FOR W1
INDUS/VAC/STEEL/RING/W2/W3	STEEL RING FOR SUCTION INTO A DISPOABLE BAG, FOR W2/W3
INDUS/VAC/W3/100T	W3 HD INDUSTRIAL VACUUM CLEANER-M CLASS -50mm TOOLS, 100Lt
INDUS/VAC/WHEELED/BRUSH	50mm WHEELED FLOOR BRUSH FOR USE ON W3
INDUS/VAC/WHEELED/SQUEEGEE	50mm WHEELED FLOOR SQUEEGEE FOR USE ON W3



TOOL ACCESSORIES



50mm DOUBLE BEND



50mm WHEELED
FLOOR BRUSH



50mm WHEELED
FLOOR SQUEEGEE



1.1kW BY-PASS MOTOR



M CLASS STAR FILTER



STEEL RING